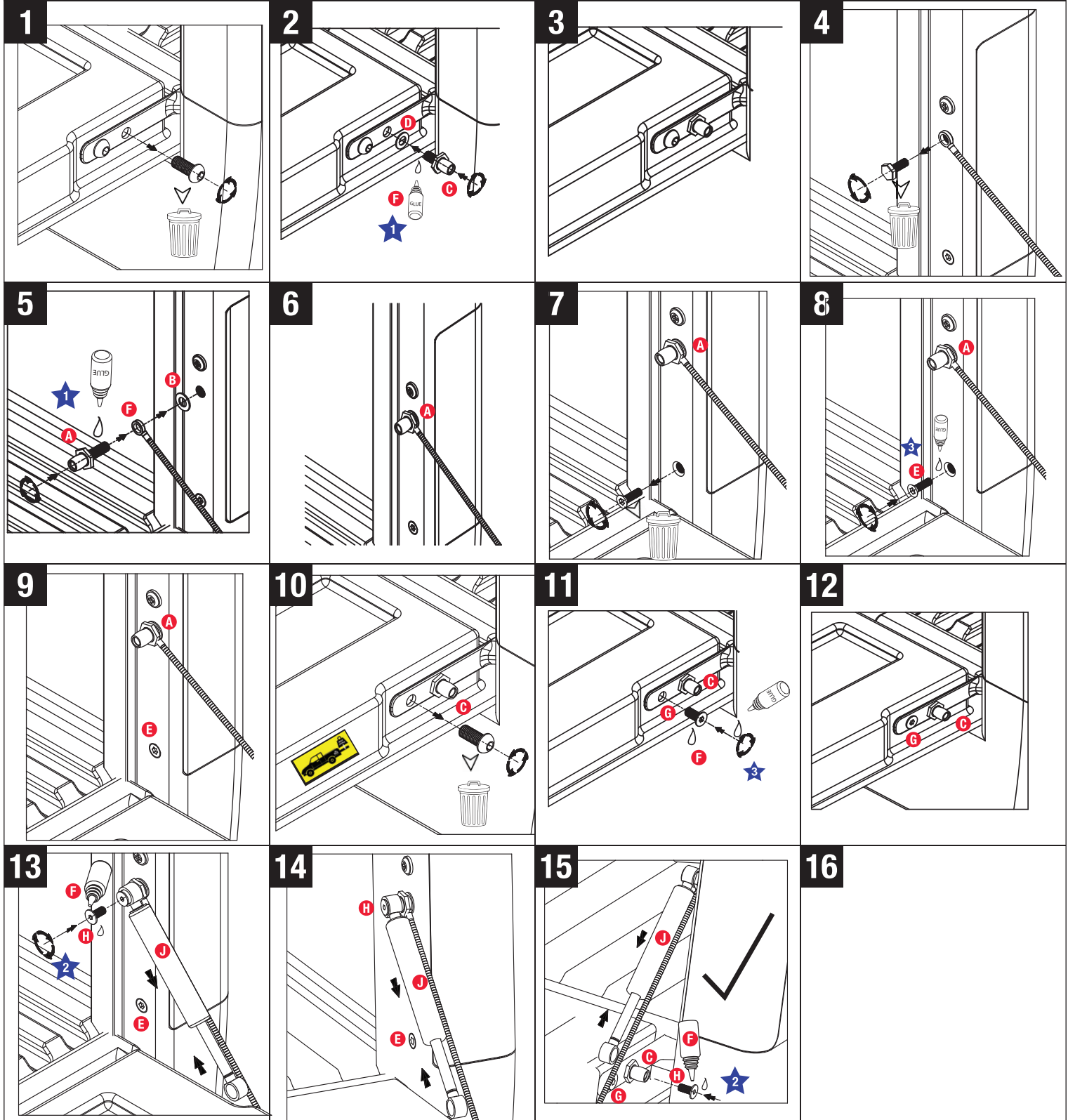


**EZDown Reloaded Instruction
- 1st Fitment**

EZDown Reloaded VW Amarok - RL0350



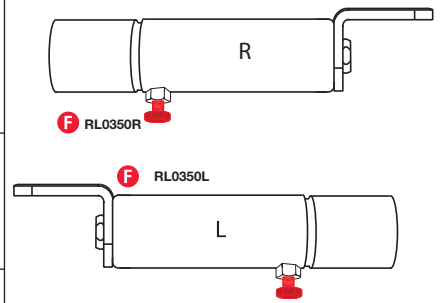
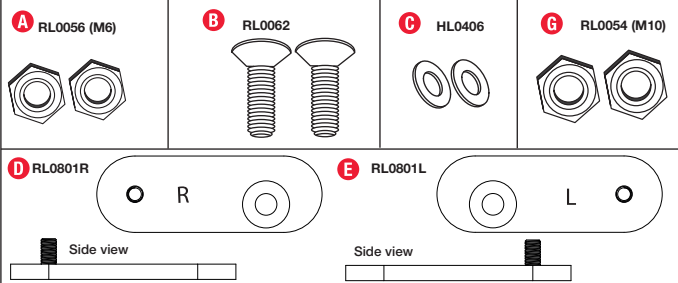
FITTING CODE	MANUFACTURER	MODEL TYPE	YEAR	STOCKIST	PRODUCT	REVISION	LABOUR	DATE	PAGE
RL0350	VOLKSWAGEN	AMAROK	2013 onwards	GENERAL USE	EZDown RELOADED	2	20min	22/10/2018	1
TORQUE - N.m	★ 27N.m±2N.m	★ 15N.m±2N.m	★ 17N.m±2N.m	www.ezdown.co.za					

NB: After installation please close tailgate gently to ensure that there is no interference with any hardware.

IMPORTANT:

No liability will be incurred by Industrial Specialised Applications company, for injury, death, or property damage caused by a product which has been set up, operated, and/or installed contrary to EZDown installation guide/manual, or which has been subjected to misuse, negligence, or accident, or which has been repaired or altered by anyone other than Industrial Specialised Applications, or which has been used in a manner or for a purpose for which the product was not designed.





**EZDown Reloaded Instruction
- 2nd Fitment**

EZDown Reloaded VW Amarok – RL0350

1 RHS and LHS are determined when sitting in the Drivers side of the Vehicle.

CAUTION:
Do not remove the red bolt from cylinder F until fully installed - if you do you will lose the pre-tension.

2 Open tailgate.
See slide 4 & 5 for area where nut G needs to be fitted.
Loosen Half a Turn before installing fitting Locking Nut shown in Slide 4.

3 RHS
Remove the bolt on the bracket and throw away.
While one person holds this bolt in place using a socket extension with the tailgate open.
The 2nd person to lie down underneath the RHS tail light and tighten the M10 locking nut G over the thread of this existing bolt making sure that this is tightened as securely as possible.

NB: Two persons are required to carry out the installation and tightening of the locking nut G.

Remove the bolt on the bracket and throw away.
While one person holds this bolt in place using a socket extension with the tailgate open.

4 Tailgate
NB: View from inside vehicle looking out. Insert bracket and fasten M8 capscrew

5
RHS - Fit Cylinder in position shown by sliding over end bolt and will lock in this position - see slide 6

6
Cylinder slides over the bolt on the bracket and then over the stud D. Ensure cylindrical locks flush onto the nut.
Fix washer and M6 Nut onto stud and fasten when tailgate is still open.

7
Repeat slides 5 to 6 for LHS.

8
REMOVE RED BOLT ON BOTH RHS AND LHS.

9
Ensure both Brackets as indicated with * are in alignment.
This is what it will look like on the inside when correctly installed.

10
NOTE:
Tailgate will fall very slowly the first cycle in order for the Reloaded to set.

11
SHOULD YOU WANT TO INCREASE YOUR PRELOAD OR REINSTALL YOUR PRELOAD PLEASE RETURN TO YOUR CLOSEST STOCKIST FOR ASSISTANCE

12

13

FITTING CODE	MANUFACTURER	MODEL TYPE	YEAR	STOCKIST	PRODUCT	REVISION	LABOUR	DATE	PAGE
RL0350	VOLKSWAGEN	AMAROK	2016 onwards	GENERAL USE	EZDown RELOADED	6	25min	15/05/2019	1
TORQUE – N.m	★ 27N.m±2N.m			★ 15N.m±2N.m		www.ezdown.co.za			

NB: After installation please close tailgate gently to ensure that there is no interference with any hardware.

IMPORTANT:
No liability will be incurred by Industrial Specialised Applications company, for injury, death, or property damage caused by a product which has been set up, operated, and/or installed contrary to EZDown installation guide/manual, or which has been subjected to misuse, negligence, or accident, or which has been repaired or altered by anyone other than Industrial Specialised Applications, or which has been used in a manner or for a purpose for which the product was not designed.

